

# Fact Sheet

## MC II 500 Pro

# BIZERBA

**Modern self-service weighing. This is what the M-Class II Pro stands for. As the first scale with a stand-alone design, it supports new store concepts: Enjoy the benefits of flexible positioning, multifunctionality and optimal operating comfort and convenience. Benefit from more performance due to a powerful Intel®Quad Core processor. An example: Optimized graphics resolution on the brilliant touch display.**



**More informationen**  
High performance  
with a wide range of  
solutions and options.

Specifications	Facts	Details
<b>Table-top model (standard)</b>	Anthracite gray	RAL 7016 Incl. installation kit: angle brackets/screws
<b>Stand (optional)</b>	Anthracite gray	RAL 7016 With storage space, accessible from both sides Incl. installation kit: screws/dowels
<b>Cast stand for column (optional)</b>	Black	RAL 9005 Diameter: 500 mm
<b>Oval base plate for column (optional)</b>	Anthracite grey	RAL 7016 Length: 750 mm x Width: 570 mm
<b>Weighing tray/pan</b>	Deep or flat version: Transparent or silver gray	RAL 7037 (silver gray)
<b>Operator display</b>	15.6" touch TFT	Resolution: 1,366 x 768 (HD/ WXGA) LED backlighting Resistive 5-wire touch technology 2-stage adjustment
<b>Operating system</b>	Windows 10 IoT Enterprise 2016 LTSB	64 bit Windows
	BizLPOS3 OpenSuse® ≥ 42.1 Leap Kernel 4.2	64 bit Linux
<b>Scale software</b>	RetailPowerScale	Bizerba scale software, compatible with RetailFramework products
	RetailIntegratorsKit (RIK)	3rd-party software
<b>Processor</b>	Intel® Celeron® Processor N3160 Quad Core	Clock rate of up to 2.24 GHz L2 cache: 2 MB Instruction set: 64 bit Integrierte Grafikkarte: Intel® HD Graphics 400
<b>RAM</b>	DDR3	4 GB RAM
<b>Mass storage</b>	SSD	60 GB, optionally 120 GB
<b>Printer</b>	3" label printer	Print speed up to 150 mm/s, depending on the paper used Roll diameter up to 120 mm
<b>Interfaces</b>	2 x USB 3.0 2 x USB 2.0 2 x COM LAN Audio output Cash register drawer connection (COM)	Super speed High speed DSUB (RS232) RJ45, GBit LAN 3.5 mm jack RJ12
<b>Weighing ranges</b>	6/15 kg 15/30 kg	Interval 2/5 g, min. 40 g Interval 5/10 g, min. 100 g
<b>Temperature range</b>	-10 °C to +40 °C	Operating temperature
<b>Power consumption</b>	Standby 2.k,3 W During operation typically 28.1 W, max. 56 W	Energy saving thanks to use of Wake on LAN Depending on the version

<b>Net weight of device</b>	MC II 500 Pro table-top version	Approx. 17.5 kg
	MC II 500 Pro with column, without cast stand/ ovale base plate	Approx. 32 kg
	MC II 500 Pro cast stand for column, consisting of two cast halves	17 kg per cast half (2 x 17 kg)
	MC II 500 Pro base plate for column	18.5 kg

Options	Facts	Details
<b>Software extensions</b>	RetailApps	Extra software function per RetailApps
	Software modules: Cash register, scanning, e-cash, inventory, shrink re-weigh, returns, return delivery, cash invoice, order, Easy Level, sum QR-barcode, Content Flash, delivery note, proof of origin, time registration, video journal, RetailConnect	Software function expansion per module
<b>Easy Level</b>	Tilt compensation	Automatic correction of incorrect weight values due to angled position of the scale
<b>WLAN modules</b>	BWLC	Bizerba Wireless LAN Client 802.11 a/b/g/n up to 300 MBit/s
	USB	USB WLAN stick (no floating sales mode possible) 802.11 a/b/g/n up to 300 MBit/s

## Infographic



## Symbols

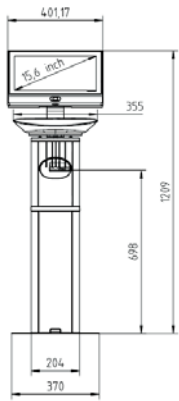


Java  
Powered

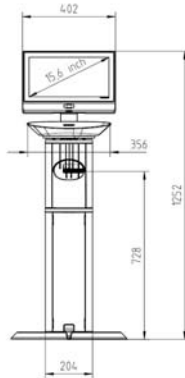
Linux 64 bit

Windows 10

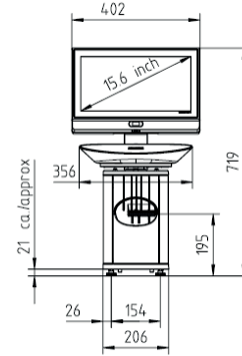
## Dimensions



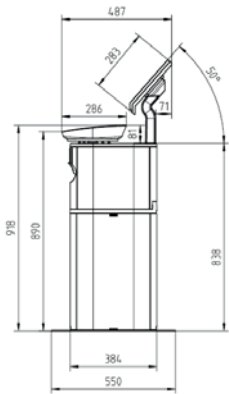
MC II 500 Pro stand version



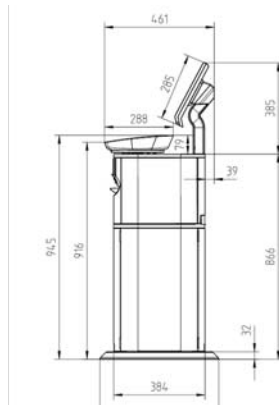
MC II 500 Pro stand version w. cast stand



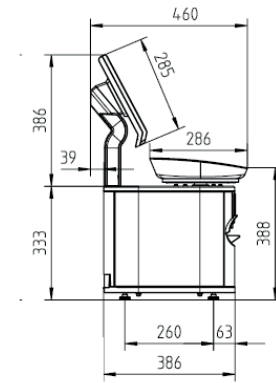
MC II 500 Pro table-top version



MC II 500 Pro stand version



MC II 500 Pro stand version w. cast stand



MC II 500 Pro table-top version

**Bizerba SE & Co. KG**  
 Wilhelm-Kraut-Straße 65  
 72336 Balingen  
 Germany

T +49 7433 12-0  
 F +49 7433 12-2696  
 marketing@bizerba.com

[www.bizerba.com](http://www.bizerba.com)