

Next Generation

# ELIXA 35

EN



Elixa 35 Next Generation:

- **Safety first:** functionality and design excellence to operate safely
- **Next generation electronics:** advanced technology for maximum durability and reliability
- **Reduced power consumption:** more efficiency, less costs, more green!

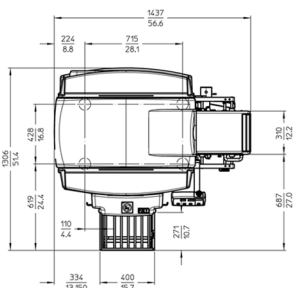
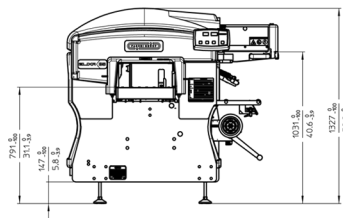
*Elixa 35*, automatic stretch packager with next generation Elixa® technology, particularly suitable for **medium to large-sized packaging centres and retail outlets**, differs from previous series by achieving higher targets in terms of **safety, technology and economy**.

The additional photocells added at the feed entrance, the next-generation microswitches designed to prevent tampering, the innovative design of the discharge which prevents any access to the moving parts, the gas springs for the opening of the upper casing, the transparent reinforced dome... they all ensure users to operate in **complete safety**.

The **next generation electronics** featured in *Elixa 35* ensures maximum durability and reliability of the machine even in problematic environments.

Thanks to the sealing belt on the outlet tray equipped with smart stand-by mode and to the new outfeed, *Elixa 35* can reduce energy consumption and heat dissipation **saving up to 50%** compared to previous series (*Elixa Mega*).

#### Main characteristics



#### Safety first

Each part of *Elixa 35L* was designed in compliance with the strictest **safety regulations**: the machine has no sharp edges and the elegant rounded aluminium sides minimise the consequences of accidental impacts.

#### Speed

*Elixa 35* reaches a speed of **35 ppm**.

#### Automatic reading

*Elixa 35* does not require any operator intervention in cases of **format change**, which makes it particularly fast and suitable to meet production deadlines of **packaging centres and retail points of medium and large size**.

#### Super-stretch technology

Thanks to the Elixa® technology, *Elixa 35* uses **one width films (280 mm)** regardless of the size of the product, allowing a **saving of film up to 20%** compared to traditional packaging machines.

#### Compactness

With a footprint lower than **2 m²**, *Elixa 35* manages to fit into any work environment, optimizing the available space.

#### Maximum integration

*Elixa 35* can be integrated optimally with the major **automatic weigh-price labelling systems** available on the market, keeping volume and footprint virtually unchanged.

#### Versatility

With a wide choice of **options**, *Elixa 35* can be easily customized according to customer **requirements**.

#### Simplicity

Characterized by an extremely intuitive and easy to remember operation, *Elixa 35* simplifies the turnover of employees. Reel changing only takes **30"**, a simple and error-proof operation!

#### Proper professional packaging

The synergy between the new Elixa® series machines and food-grade films produced by *Gruppo Fabbri* allows the realities operating in food packaging to achieve maximum results with minimum investment. *Elixa 35* can use **neutral super-stretch film** or **continuously printed film** sealed on the lower part of the tray thanks to the efficiency of the sealing belt.

#### Plug 'n' Pack mode

*Elixa 35* is powered by **230 V** without any need for compressed air.

#### Energy saving

With a new advanced software, *Elixa 35* is able to manage its own ignition timing in on/off mode, thus optimising consumption and offering energy savings of up to **50%** compared to the previous model (*Elixa Mega*).

**35** Maximum speed: up to 35 packages a minute.

**120** Minimum tray format: 120 x 100 x 10\* (L x W x H).

**340** Maximum tray format: 340 x 230 x 160\* (L x W x H).

**280** Reel width: 280 mm (one width).

**14** Optional features from the list.

**30** Reel change time 30".

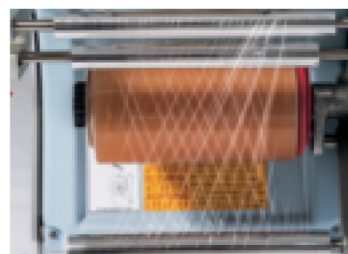
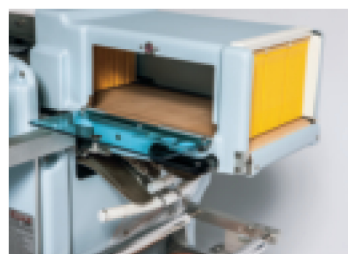
**240** Machine weight: 240 kg.

**230** Supply voltage: 230 V mono-phase

\*It is not possible to achieve the three maximum dimensions of the tray at the same time

Gruppo Fabbri guarantees quick, efficient and widespread technical assistance, thanks to a team of qualified and multi-lingual professionals, always at the disposal of customers.

**DISCLAIMER:** The content and information provided in this brochure are intended for general marketing purposes, therefore no subject (person or company) must consider them exact or complete. Gruppo Fabbri Vignola S.p.A., its company organisations, managers, officials, employees, agents and consultants will not be held liable (including liability resulting from error or negligence, without any limitation) for any direct or indirect loss, damage, cost or obligation which could have been suffered resulting from the use or reliance on that contained or omitted in this brochure. Gruppo Fabbri Vignola S.p.A. reserves the right to modify the specifics of its products without any prior notice. For further technical or economical information, please contact the Gruppo Fabbri Vignola S.p.A. Sales Department.



Gruppo Fabbri Vignola S.p.A.

Via per Sassuolo, 1863 – 41058 Vignola (MO) – Italia

Tel.: +39 059 768 411 – Fax +39 059 762 864 – E-mail: info@gruppofabbri.com – www.gruppofabbri.com

Single-member Company - Company subject to management and coordination by Fabbri Vignola S.p.A.