

# Fact Sheet

## iL Economy 300F/SP Type2

*The load receptor for all applications: thanks to its simple and robust design, this stand-alone entry model allows flexible adjustment to different applications whether integrated in desks or systems or for mobile use.*



**More information**  
High performance  
with a wide range of  
solutions and options.

Specifications	Facts	Details
<b>Weighing ranges</b>	From 0.3 kg to 300 kg	Interval: 0.1 g - 100 g
<b>Load cell made of aluminum</b>	PW6C, nominal load 3-40 kg, IP67	For operation in dry areas with a non-aggressive atmosphere
	SP4M, nominal load 15-50 kg, IP67	
	PW10A, nominal load 50-300 kg, IP67	
	PW12C, nominal load 150-500 kg, IP67	
<b>Load cells made of stainless steel</b>	PC6, nominal load 10-400 kg, IP68	For operation in a wet environment with high cleaning requirements
	PW29, nominal load 250 kg, IP68 / IP69	
	PCB, nominal load 250-500 kg, IP68 / IP69	
<b>Dimensions</b>	Dimensions of load platter: 200x160 mm	Overall height 56 mm +15 mm with PW6C load cell
	Dimensions of load platter: 335x260 mm	Overall height 56 mm +15 mm with PW6C load cell
	Dimensions of load platter: 335x260 mm	Overall height 80 mm +15 mm with SP4M & PC6 load cell
	Dimensions of load platter: 500x400 mm	Overall height 85 mm +15 mm with PW10A & PC6 load cell
	Dimensions of load platter: 600x450 mm	Overall height 91 mm +15 mm with PW10A & PC6 load cell
	Dimensions of load platter: 600x600 mm	Overall height 91 mm +15 mm with PC6 load cell
	Dimensions of load platter: 800x600 mm	Overall height 120 mm +20 mm with PW12 load cell Overall height 125 mm +25 mm with PW29 & PCB load cell
<b>Materials</b>	Base and load carrier electrogalvanized, load platter made of stainless steel	Load cell made of aluminum (stainless steel load cell for 600x600 mm)
	All stainless steel	Stainless steel load cell
<b>Mounting method</b>	Free-standing	Table or floor mount
<b>IP rating</b>	IP67	with load cells PW6C, SP4M, PW10A, PW12C
	IP68	with load cell PC6
	IP68 / IP69	with load cell PW29, PCB
<b>Explosion-proof version</b>	Zone 1/21	Load cells in Ex ib version for Ex zone 1/21
	Zone 2/22	Load cells in Ex ib version for Ex zone 2/22 (see following table)
<b>Ambient temperature</b>	-10 °C to +40 °C	Operation
	-50 °C to +85 °C	Storage

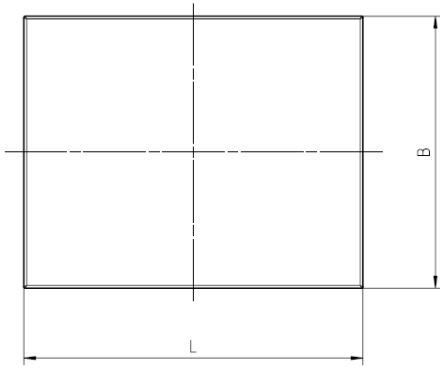
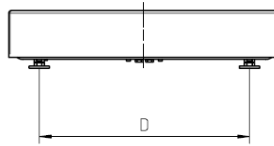
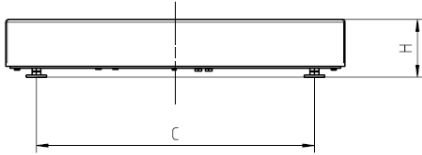
Options	Facts	Details
<b>Preload compensation</b>	electronic	Weight for preload compensation must be stipulated with purchase order.
<b>Stand</b>	Stainless steel version for weighing terminals eS10-T, iS10, iS20, iS30, iS50 and ST	For mounting to load receptor 335x260, 500x400, 600x450, 600x600 and 800x600 mm
<b>Roller conveyor non-powered, mounted to load platter, "not suitable in potentially explosive atmosphere", "not suitable for wet areas"</b>	Frame: Aluminum u-shaped profile	For load platter size: 335x260 mm
	Rollers: Plastic (blue)	Load capacity: 30 kg
	Bearing: Plastic bottoms with stainless steel balls	Number of rollers: 8
	Axes, cross-struts: Stainless steel	Frame dimensions: 338x252 mm Roller pitch: 44 mm Roller conveyor height: 77 mm For load receptors with a max. preload of $\geq 4$ kg
	Frame: Aluminum u-shaped profile	For load platter size: 500x400 mm
	Rollers: Plastic (blue)	Load capacity: 60 kg
<b>Roller conveyor non-powered, mounted to load platter, "suitable in potentially explosive atmosphere", "not suitable for wet areas"</b>	Bearing: Plastic bottoms with stainless steel balls	Number of rollers: 10
	Axes, cross-struts: Stainless steel	Frame dimensions: 490x397 mm Roller pitch: 50 mm Roller conveyor height: 75 mm For load receptors with a max. preload of $\geq 5$ kg
	Frame: Aluminum u-shaped profile	For load platter size: 600x450 mm
	Rollers: Steel, galvanized	Load capacity: 150 kg
	Bearing: Steel, galvanized	Number of rollers: 11
	Axes, cross-struts: Aluminum	Frame dimensions: 790x586 mm Roller pitch: 75 mm Roller conveyor height: 75 mm For load receptors with a max. preload of $\geq 8$ kg
<b>Roller conveyor non-powered, mounted to load platter, "suitable in potentially explosive atmosphere", "not suitable for wet areas"</b>	Frame: Aluminum u-shaped profile	For load platter size: 800x600 mm
	Rollers: Plastic (blue)	Load capacity: 60 kg
	Bearing: Plastic bottoms with stainless steel balls	Number of rollers: 11
	Axes, cross-struts: Stainless steel	Frame dimensions: 790x586 mm Roller pitch: 75 mm Roller conveyor height: 75 mm For load receptors with a max. preload of $\geq 10$ kg
	Frame: Aluminum u-shaped profile	For load platter size: 500x400 mm
	Rollers: Steel, galvanized	Load capacity: 150 kg

	Bearing: Bearing insert made of galvanized steel plate, with single-row ball bearing Axes, cross-struts: Steel, galvanized	Number of rollers: 10 Frame dimensions: 490x395 mm Roller pitch: 50 mm Roller conveyor height: 75 mm For load receptors with a max. preload of $\geq 10$ kg For load platter size: 800x600 mm Load capacity: 300 kg
	Frame: Bracket, galvanized steel Rollers: Steel, galvanized Bearing: Bearing insert made of galvanized steel plate, with single-row ball bearing Shafts: Stainless steel 12 mm	Number of rollers: 8 Frame dimensions: 790x598 mm Roller pitch: 100 mm Roller conveyor height: 59 mm For load receptors with a max. preload of $\geq 18$ kg
<b>Stand</b>	For load receptors 335x260 mm  – Material: Steel hot-dip galvanized – Material: Stainless steel For load receptors 500x400 mm  – Material: Steel hot-dip galvanized – Material: Stainless steel For load receptors 800x600 mm  – Material: Steel hot-dip galvanized – Material: Stainless steel	High upper edge of mounting block = 724 mm +15 mm           High upper edge of mounting block = 724 mm +15 mm           High upper edge of mounting block = 724 mm +15 mm
<b>Portable wheeled for load receptor 500x400 mm</b>	Mobile stand for mains operation  Mobile stand for battery operation  Mobile stand for mains operation Ex zone 1 & 2 Mobile stand for battery operation Ex zone 1 & 2	Material: Steel, hot-dip galvanized  Material: Stainless steel Material: Steel, hot-dip galvanized Material: Stainless steel Material: Steel, hot-dip galvanized Material: Stainless steel Material: Steel, hot-dip galvanized Material: Stainless steel
<b>Counter-top mounting</b>	for terminals eS10-T, iS10 and iS20 (not for version with an overall height of 56 mm)	For dimensions 335x260, 500x400, 600x450, 600x600 and 800x600 mm
<b>Sealing compound</b>	for cable junction box	Connection of load receptor to existing weighing terminal

### Symbols

							
IP68 rating	IP69 rating	Single-point	EX zone 1/21	EX zone 2/22	Floor mount	Table mount	Mobile installation


## Dimensional drawings



Typ / TYPE	Material	L	B	H	C	D	Gewicht / WEIGHT	Maßblatt / DIM. DRAWING
180 x 110	V2A	180	110	56+15	138	68	2,2kg	38035057001
200 x 160	V2A	200	160	56+15	158	118	2,6kg	38050602000
335 x 260	St	335	260	56+15	293	218	6,8kg	38059508000
335 x 260	V2A / St	335	260	80+15	293	218	7,7kg	38059506000
500 x 400	V2A / St	500	400	85+15	410	310	32,2kg	38060659000
600 x 450	V2A / St	600	450	91+15	480	360	30,9kg	38060004000
600 x 600	V2A / St	600	600	91+15	480	510	41,1kg	38060013000
800 x 600	St	800	600	120+20	650	500	57,9kg	38058000000
800 x 600	V2A	800	600	125+25	650	500	56,6kg	38060015000

St: Stahl verzinkt / GALVANIZED STEEL  
 V2A: Edelstahl / STAINLESS STEEL

## See also

 [Tabelle\\_iL\\_Economy\\_300FSP\\_T2.pdf](#) [► 5]

Weighing range	metrologically approved interval	non verifiable resolution	Load cell	IP rating	max. preload in kg	Version				own weight
						an stainless steel	Electrogamma / Stainless	Ex zone 1/21	Ex zone 2/22	
180x110 mm, Load cell Aluminium, Height 56+15 mm										
0,3 kg	0,1 g		PW6C 1,5kg C3MR Aluminium	IP67	0,1	X				2,2 kg
0,3 / 0,6 kg Dual range	0,1 / 0,2 g		PW6C 1,5kg C3MR Aluminium	IP67	0,1	X				2,2 kg
0,3 kg		0,05 g	PW6C 3kg C3MR Aluminium	IP67	2	X				2,2 kg
0,6 / 1,2 kg Dual range	0,2 / 0,5 g		PW6C 3kg C3MR Aluminium	IP67	1,1	X				2,2 kg
1,2 kg	0,2 g		PW6C 3kg C6 Aluminium	IP67	1,1	X				2,2 kg
1,5 / 3 kg Dual range	0,5 / 1 g		PW6C 5kg C3MR Aluminium	IP67	1,2	X				2,2 kg
3 kg		0,1	PW6C 5kg C6 Aluminium	IP67	1,2	X				2,2 kg
3 kg	0,5 g		PW6C 5kg C6 Aluminium	IP67	1,2	X				2,2 kg
3 kg	1 g		PW6C 5kg C3MR Aluminium	IP67	1,2	X				2,2 kg
200x160 mm, Load cell Aluminium, Height 56+15 mm										
0,3 kg	0,1 g		PW6C 1,5kg C3MR Aluminium	IP67	0,1	X				2,5 kg
0,3 / 0,6 kg Dual range	0,1 / 0,2 g		PW6C 1,5kg C3MR Aluminium	IP67	0,1	X				2,5 kg
0,3 kg		0,05 g	PW6C 3kg C3MR Aluminium	IP67	2	X				2,5 kg
0,6 / 1,2 kg Dual range	0,2 / 0,5 g		PW6C 3kg C3MR Aluminium	IP67	1,1	X				2,5 kg
1,2 kg	0,2 g		PW6C 3kg C6 Aluminium	IP67	1,1	X				2,5 kg
1,5 / 3 kg Dual range	0,5 / 1 g		PW6C 5kg C3MR Aluminium	IP67	1,2	X				2,5 kg
3 kg		0,1	PW6C 5kg C6 Aluminium	IP67	1,2	X				2,5 kg
3 kg	0,5 g		PW6C 5kg C6 Aluminium	IP67	1,2	X				2,5 kg
3 kg	1 g		PW6C 5kg C3MR Aluminium	IP67	1,2	X				2,5 kg
335x260 mm, Load cell Aluminium, Height 56+15 mm, extra flat design										
3 kg		0,1 g	PW6C 15kg C3 Aluminium	IP67	8,6		X			6,8 kg
3 kg	1 g		PW6C 15kg C3 Aluminium	IP67	8,6		X			6,8 kg
6 kg		0,2 g	PW6C 15kg C3 Aluminium	IP67	5,2		X			6,8 kg
6 kg	1 g		PW6C 15kg C6 Aluminium	IP67	5,2		X			6,8 kg
6 kg	2 g		PW6C 15kg C3 Aluminium	IP67	5,2		X			6,8 kg
3 / 6 kg Dual range	1 / 2 g		PW6C 15kg C3MR Aluminium	IP67	5,2		X			6,8 kg
3 / 6 kg Dual division	1 / 2 g		PW6C 15kg C6MR Aluminium	IP67	5,2		X			6,8 kg
12 kg	2 g		PW6C 30kg C6 Aluminium	IP67	13,3		X			6,8 kg
15 kg		0,5 g	PW6C 30kg C3MR Aluminium	IP67	9,9		X			6,8 kg
15 kg	5 g		PW6C 30kg C3MR Aluminium	IP67	9,9		X			6,8 kg
6 / 15 kg Dual range	2 / 5 g		PW6C 30kg C3MR Aluminium	IP67	9,9		X			6,8 kg
6 / 12 kg Dual division	2 / 5 g		PW6C 30kg C6MR Aluminium	IP67	13,3		X			6,8 kg
30 kg		1 g	PW6C 40kg C6 Aluminium	IP67	2,8		X			6,8 kg
30 kg	5 g		PW6C 40kg C6 Aluminium	IP67	2,8		X			6,8 kg
30 kg	10 g		PW6C 40kg C3 Aluminium	IP67	2,8		X			6,8 kg
15 / 30 kg Dual range	5 / 10 g		PW6C 40kg C3MR Aluminium	IP67	2,8		X			6,8 kg

15 / 30 kg Dual division	5 / 10 g		PW6C 40kg C6 Aluminium	IP67	2,8		X			6,8 kg
<b>335x260 mm, Load cell Aluminium, Height 80+15 mm</b>										
3 kg		0,1 g	SP4M 15kg C3MR Aluminium	IP67	8,6		X	X	X	7,7 kg
3 kg	1 g		SP4M 15kg C6MR Aluminium	IP67	8,6		X	X	X	7,7 kg
6 kg		0,2 g	SP4M 15kg C6MR Aluminium	IP67	5,2		X	X	X	7,7 kg
6 kg	1 g		SP4M 15kg C6MR Aluminium	IP67	5,2		X	X	X	7,7 kg
6 kg	2 g		SP4M 15kg C3MR Aluminium	IP67	5,2		X	X	X	7,7 kg
3 / 6 kg Dual range	1 / 2 g		SP4M 15kg C3MR Aluminium	IP67	5,2		X	X	X	7,7 kg
3 / 6 kg Dual division	1 / 2 g		SP4M 15kg C6MR Aluminium	IP67	5,2		X	X	X	7,7 kg
12 kg	2 g		SP4M 36kg C6MR Aluminium	IP67	19,3		X	X	X	7,7 kg
15 kg		0,5 g	SP4M 30kg C3MR Aluminium	IP67	9,9		X	X	X	7,7 kg
15 kg	5 g		SP4M 30kg C3MR Aluminium	IP67	9,9		X	X	X	7,7 kg
6 / 15 kg Dual range	2 / 5 g		SP4M 30kg C3MR Aluminium	IP67	9,9		X	X	X	7,7 kg
6 / 12 kg Dual division	2 / 5 g		SP4M 36kg C6MR Aluminium	IP67	19,3		X	X	X	7,7 kg
30 kg		1 g	SP4M 50kg C3MR Aluminium	IP67	12,8		X	X	X	7,7 kg
30 kg	10 g		SP4M 50kg C3MR Aluminium	IP67	12,8		X	X	X	7,7 kg
15 / 30 kg Dual range	5 / 10 g		SP4M 50kg C3MR Aluminium	IP67	12,8		X	X	X	7,7 kg
<b>335x260 mm, Load cell Stainless steel, Height 80+15 mm</b>										
1,5 / 3 kg Dual division	0,5 / 1 g		PC6 10 kg C3/M16 Stainless steel	IP68	3,6	X		X	X	7,7 kg
3 kg		0,1 g	PC6 20kg C3 Stainless steel	IP68	13,6	X		X	X	7,7 kg
3 kg	1 g		PC6 20kg C3 Stainless steel	IP68	13,6	X		X	X	7,7 kg
6 kg		0,2 g	PC6 20kg C3 Stainless steel	IP68	10,2	X		X	X	7,7 kg
6 kg	2 g		PC6 20kg C3 Stainless steel	IP68	10,2	X		X	X	7,7 kg
3 / 6 kg Dual division	1 / 2 g		PC6 20kg C3/M16 Stainless steel	IP68	10,2	X		X	X	7,7 kg
15 kg		0,5 g	PC6 50kg C3 Stainless steel	IP68	34,4	X		X	X	7,7 kg
15 kg	5 g		PC6 50kg C3 Stainless steel	IP68	34,4	X		X	X	7,7 kg
6 / 15 kg Dual range	2 / 5 g		PC6 50kg C3/M16 Stainless steel	IP68	29,9	X		X	X	7,7 kg
6 / 12 kg Dual division	2 / 5 g		PC6 50kg C3/M16 Stainless steel	IP68	29,9	X		X	X	7,7 kg
30 kg		1 g	PC6 100kg C3 Stainless steel	IP68	68,8	X		X	X	7,7 kg
30 kg	10 g		PC6 100kg C3 Stainless steel	IP68	68,8	X		X	X	7,7 kg
15 / 30 kg Dual division	5 / 10 g		PC6 100kg C3/M16 Stainless steel	IP68	68,8	X		X	X	7,7 kg
<b>500x400 mm, Load cell Aluminium, Height 85+15 mm</b>										
15 kg		0,5 g	PW10A 50kg C3MR Aluminium	IP67	20,9		X	X	X	23,2 kg
15 kg	5 g		PW10A 50kg C3MR Aluminium	IP67	20,9		X	X	X	23,2 kg
30 kg		1 g	PW10A 100kg C3MR Aluminium	IP67	53,8		X	X	X	23,2 kg
30 kg	10 g		PW10A 100kg C3MR Aluminium	IP67	53,8		X	X	X	23,2 kg
15 / 30 kg Dual range	5 / 10 g		PW10A 50kg C3MR Aluminium	IP67	3,8		X	X	X	23,2 kg
60 kg		2 g	PW10A 150kg C3MR Aluminium	IP67	69,6		X	X	X	23,2 kg
60 kg	20 g		PW10A 150kg C3MR Aluminium	IP67	69,6		X	X	X	23,2 kg

30 / 60 kg Dual range	10 / 20 g		PW10A 150kg C3MR Aluminium	IP67	69,6		X	X	X	23,2 kg
150 kg		5 g	PW10A 300 kg C3 Aluminium	IP67	117		X	X	X	23,2 kg
150 kg	50 g		PW10A 300 kg C3 Aluminium	IP67	117		X	X	X	23,2 kg
60 / 150 kg Dual range	20 / 50 g		PW10A 300 kg C3MR Aluminium	IP67	117		X	X	X	23,2 kg
500x400 mm, Load cell Stainless steel, Height 85+15 mm										
15 kg		0,5 g	PC6 50kg C3 Stainless steel	IP68	20,9	X		X	X	23,2 kg
15 kg	5 g		PC6 50kg C3 Stainless steel	IP68	20,9	X		X	X	23,2 kg
6 / 12 kg Dual division	2 / 5 g		PC6 50kg C3/M16 Stainless steel	IP68	24,3	X		X	X	23,2 kg
30 kg		1 g	PC6 100kg C3 Stainless steel	IP68	53,8	X		X	X	23,2 kg
30 kg	10 g		PC6 100kg C3 Stainless steel	IP68	53,8	X		X	X	23,2 kg
15 / 30 kg Dual division	5 / 10 g		PC6 100kg C3/M16 Stainless steel	IP68	53,8	X		X	X	23,2 kg
60 kg		2 g	PC6 200kg C3 Stainless steel	IP68	119,6	X		X	X	23,2 kg
60 kg	20 g		PC6 200kg C3 Stainless steel	IP68	119,6	X		X	X	23,2 kg
30 / 60 kg Dual division	10 / 20 g		PC6 200kg C3/M16 Stainless steel	IP68	119,6	X		X	X	23,2 kg
150 kg		5 g	PC6 200kg C3 Stainless steel	IP68	17	X		X	X	23,2 kg
150 kg	50 g		PC6 200kg C3 Stainless steel	IP68	17	X		X	X	23,2 kg
60 / 150 kg Dual range	20 / 50 g		PC6 200kg C3/M16 Stainless steel	IP68	17	X		X	X	23,2 kg
60 / 120 kg Meherteilung	20 / 50 g		PC6 200kg C3/M16 Stainless steel	IP68	51,2	X		X	X	23,2 kg
600x450 mm, Load cell Aluminium, Height 91+15 mm										
30 kg		1 g	PW10A 100kg C3MR Aluminium	IP67	54,8		X	X	X	30,9 kg
30 kg	10 g		PW10A 100kg C3MR Aluminium	IP67	54,8		X	X	X	30,9 kg
15 / 30 kg Dual range	5 / 10 g		PW10A 50kg C3MR Aluminium	IP67	1,8		X	X	X	30,9 kg
60 kg		2 g	PW10A 150kg C3MR Aluminium	IP67	67,6		X	X	X	30,9 kg
60 kg	20 g		PW10A 150kg C3MR Aluminium	IP67	67,6		X	X	X	30,9 kg
30 / 60 kg Dual range	10 / 20 g		PW10A 150kg C3MR Aluminium	IP67	67,6		X	X	X	30,9 kg
150 kg		5 g	PW10A 300 kg C3 Aluminium	IP67	115		X	X	X	30,9 kg
150 kg	50 g		PW10A 300 kg C3 Aluminium	IP67	115		X	X	X	30,9 kg
60 / 150 kg Dual range	20 / 50 g		PW10A 300 kg C3MR Aluminium	IP67	149,2		X	X	X	30,9 kg
600x450 mm, Load cell Stainless steel, Height 91+15 mm										
30 kg		1 g	PC6 100kg C3 Stainless steel	IP68	51,8	X		X	X	30,9 kg
30 kg	10 g		PC6 100kg C3 Stainless steel	IP68	51,8	X		X	X	30,9 kg
15 / 30 kg Dual division	5 / 10 g		PC6 100kg C3/M16 Stainless steel	IP68	51,8	X		X	X	30,9 kg
60 kg		2 g	PC6 200kg C3 Stainless steel	IP68	117,6	X		X	X	30,9 kg
60 kg	20 g		PC6 200kg C3 Stainless steel	IP68	117,6	X		X	X	30,9 kg
30 / 60 kg Dual division	10 / 20 g		PC6 200kg C3/M16 Stainless steel	IP68	117,6	X		X	X	30,9 kg
150 kg		5 g	PC6 200kg C3 Stainless steel	IP68	15	X		X	X	30,9 kg
150 kg	50 g		PC6 200kg C3 Stainless steel	IP68	15	X		X	X	30,9 kg
60 / 150 kg Dual range	20 / 50 g		PC6 200kg C3/M16 Stainless steel	IP68	15	X		X	X	30,9 kg
60 / 120 kg Dual division	20 / 50 g		PC6 200kg C3/M16 Stainless steel	IP68	49,2	X		X	X	30,9 kg

600x600 mm, Load cell Stainless steel, base and load carrier electrogalvanized , Height 91+15 mm										
30 kg		1 g	PC6 100kg C3 Stainless steel	IP68	47,8		X	X	X	41,1 kg
30 kg	10 g		PC6 100kg C3 Stainless steel	IP68	47,8		X	X	X	41,1 kg
15 / 30 kg Dual range	5 / 10 g		PC6 100kg C3/M16 Stainless steel	IP68	47,8		X	X	X	41,1 kg
15 / 30 kg Dual division	5 / 10 g		PC6 100kg C3/M16 Stainless steel	IP68	47,8		X	X	X	41,1 kg
60 kg		2 g	PC6 200kg C3 Stainless steel	IP68	110,6		X	X	X	41,1 kg
60 kg	20 g		PC6 200kg C3 Stainless steel	IP68	110,6		X	X	X	41,1 kg
30 / 60 kg Dual range	10 / 20 g		PC6 200kg C3/M16 Stainless steel	IP68	110,6		X	X	X	41,1 kg
30 / 60 kg Dual division	10 / 20 g		PC6 200kg C3/M16 Stainless steel	IP68	110,6		X	X	X	41,1 kg
60 / 150 kg Dual range	20 / 50 g		PC6 200kg C3/M16 Stainless steel	IP68	8		X	X	X	41,1 kg
150 kg		5 g	PC6 200kg C3 Stainless steel	IP68	8		X	X	X	41,1 kg
150 kg	50 g		PC6 200kg C3 Stainless steel	IP68	8		X	X	X	41,1 kg
600x600 mm, Load cell Stainless steel, Height 91+15 mm										
30 kg		1 g	PC6 100kg C3 Stainless steel	IP68	47,8	X		X	X	41,1 kg
30 kg	10 g		PC6 100kg C3 Stainless steel	IP68	47,8	X		X	X	41,1 kg
15 / 30 kg Dual range	5 / 10 g		PC6 100kg C3/M16 Stainless steel	IP68	47,8	X		X	X	41,1 kg
15 / 30 kg Dual division	5 / 10 g		PC6 100kg C3/M16 Stainless steel	IP68	47,8	X		X	X	41,1 kg
60 kg		2 g	PC6 200kg C3 Stainless steel	IP68	116,6	X		X	X	41,1 kg
60 kg	20 g		PC6 200kg C3 Stainless steel	IP68	116,6	X		X	X	41,1 kg
30 / 60 kg Dual range	10 / 20 g		PC6 200kg C3/M16 Stainless steel	IP68	116,6	X		X	X	41,1 kg
30 / 60 kg Dual division	10 / 20 g		PC6 200kg C3/M16 Stainless steel	IP68	116,6	X		X	X	41,1 kg
60 / 150 kg Dual range	20 / 50 g		PC6 200kg C3/M16 Stainless steel	IP68	8	X		X	X	41,1 kg
150 kg		5 g	PC6 200kg C3 Stainless steel	IP68	8	X		X	X	41,1 kg
150 kg	50 g		PC6 200kg C3 Stainless steel	IP68	8	X		X	X	41,1 kg
800x600 mm, Load cell Aluminium, Height 120+20mm										
30 kg		1 g	PW12C 150kg C3MR Aluminium	IP67	86,8		X	X	X	57,9 kg
30 kg	10 g		PW12C 150kg C3MR Aluminium	IP67	86,8		X	X	X	57,9 kg
60 kg		2 g	PW12C 150kg C3MR Aluminium	IP67	52,6		X	X	X	57,9 kg
60 kg	20 g		PW12C 150kg C3MR Aluminium	IP67	52,6		X	X	X	57,9 kg
30 / 60 kg Dual range	10 / 20 g		PW12C 150kg C3MR Aluminium	IP67	52,6		X	X	X	57,9 kg
150 kg		5 g	PW12C 300kg C3MR Aluminium	IP67	100		X	X	X	57,9 kg
150 kg	50 g		PW12C 300kg C3MR Aluminium	IP67	100		X	X	X	57,9 kg
60 / 150 kg Dual range	20 / 50 g		PW12C 300kg C3MR Aluminium	IP67	100		X	X	X	57,9 kg
300 kg		10 g	PW12C 500kg C3MR Aluminium	IP67	129		X	X	X	57,9 kg
300 kg	100 g		PW12C 500kg C3MR Aluminium	IP67	129		X	X	X	57,9 kg
150 / 300 kg Dual range	50 / 100 g		PW12C 500kg C3MR Aluminium	IP67	129		X	X	X	57,9 kg
800x600 mm, Load cell Stainless steel, Height 125+25 mm										
30 kg		1 g	PW29 100kg C3MR Stainless steel	IP68 / IP69	186,8	X		-	-	56,6 kg
30 kg	10 g		PW29 100kg C3MR Stainless steel	IP68 / IP69	186,8	X		-	-	56,6 kg



60 kg		2 g	PW29 250kg C3MR Stainless steel	IP68 / IP69	152,6	X		-	-	56,6 kg
60 kg	20 g		PW29 250kg C3MR Stainless steel	IP68 / IP69	152,6	X		-	-	56,6 kg
30 / 60 kg Dual division	10 / 20 g		PCB 250kg C3/MI6 Stainless steel	IP68 / IP69	152,6	X		X	X	56,6 kg
150 kg		5 g	PCB 500kg C3/MI6 Stainless steel	IP68 / IP69	300	X		X	X	56,6 kg
150 kg	50 g		PCB 500kg C3/MI6 Stainless steel	IP68 / IP69	300	X		X	X	56,6 kg
60 / 150 kg Dual range	20 / 50 g		PCB 500kg C3/MI6 Stainless steel	IP68 / IP69	300	X		X	X	56,6 kg
60 / 120 kg Dual division	20 / 50 g		PCB 500kg C3/MI6 Stainless steel	IP68 / IP69	334,2	X		X	X	56,6 kg
300 kg		10 g	PCB 500kg C3/MI6 Stainless steel	IP68 / IP69	129	X		X	X	56,6 kg
300 kg	100 g		PCB 500kg C3/MI6 Stainless steel	IP68 / IP69	129	X		X	X	56,6 kg
150 / 300 kg Dual division	50 / 100 g		PCB 500kg C3/MI6 Stainless steel	IP68 / IP69	129	X		X	X	56,6 kg

---

**Bizerba SE & Co. KG**

Wilhelm-Kraut-Straße 65  
72336 Balingen

T +49 7433 12-0  
fax: +49 7433 12-2696  
marketing@bizerba.com

**[www.bizerba.com](http://www.bizerba.com)**