

Fact Sheet

BIZERBA

iL Special 750E/MP

The simple and robust design of the load receptor ensures low-maintenance and wear-resistant operation with a high level of long-term accuracy. Due to its low design of only 35 mm it ensures a smooth procedure even without being built into a pit.



More information
High performance
with a wide range of
solutions and options.

Specifications	Facts	Details
Weighing range	150-600 kg	Interval: 50-200 g
Load cell	HBM Z6FC3	4 strain gauge load cells hermetically sealed and corrosion-resistant
Dimensions	800x1,000 mm	
Materials	<ul style="list-style-type: none"> – All stainless steel – V2A, checkered plate – Painted, checkered plate 	Load platter welded onto load frame
Overall height	35 mm	
Mounting method	Traversable floor scale	<ul style="list-style-type: none"> – Freestanding with drive-on ramp(s) and 4 fixing plates – Built-in with 4 fixing plates (set up in the pit floor)
IP rating	IP67	<ul style="list-style-type: none"> – Load cells and junction box for wet areas – Junction box for dry areas
Explosion-proof version	EX zone 1/21	Load cells in Ex ib version for Ex zone 1/21
	EX zone 2/22	Additional plate for Ex zone 2/22
Ambient temperature	-10 °C to +40 °C	Operation
	-50 °C to +85 °C	Storage
Design loads	Load cell nominal load 100 kg	<ul style="list-style-type: none"> – Design load 1: 375 kg – Design load 2: 300 kg – Design load 3: 225 kg – Wheel load: 100 kg – Axle load: 190 kg
	Load cell nominal load 200 kg	<ul style="list-style-type: none"> – Design load 1: 750 kg – Design load 2: 600 kg – Design load 3: 450 kg – Wheel load: 190 kg – Axle load: 380 kg
Accuracy class	Class III (electromechanical scales)	

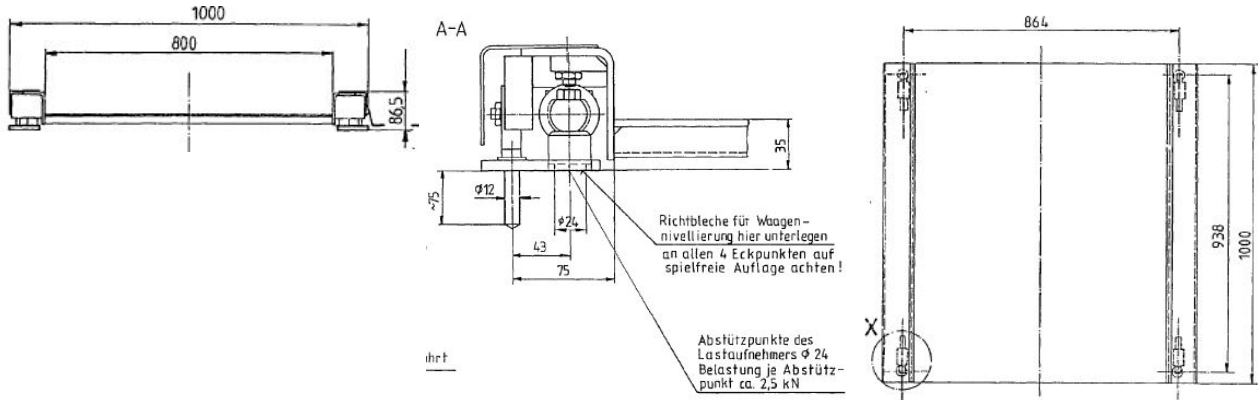
Options	Facts	Details
2nd drive-on ramp	All stainless steel	
Explosion-proof version	EX zone 1/21	Load cells in Ex ib version for Ex zone 1/21
	EX zone 2/22	Additional plate for Ex zone 2/22
Special dimensions	On request	

Info graphics


Symbols



Dimensional drawings



See also

 Tabelle_iL_Special_750EMP.pdf [▶ 3]

Weighing range	metrologically approved interval	Dimensions	Load cell	max. preload	Version		
					All stainless steel	Painted	Ex
150 kg	50 g	800 x 1.000 mm	HBM Z6FC3	150 kg	X	X	X
300 kg	100 g	800 x 1.000 mm		300 kg	X	X	X
600 kg	200 g	800 x 1.000 mm		60 kg	X	X	X
300/600 kg	100/200g (dual range/ dual division)	800 x 1.000 mm		60 kg	X	X	X

Bizerba SE & Co. KG

Wilhelm-Kraut-Straße 65
72336 Balingen

T +49 7433 12-0
fax: +49 7433 12-2696
marketing@bizerba.com

www.bizerba.com