

# Fact Sheet

# BIZERBA

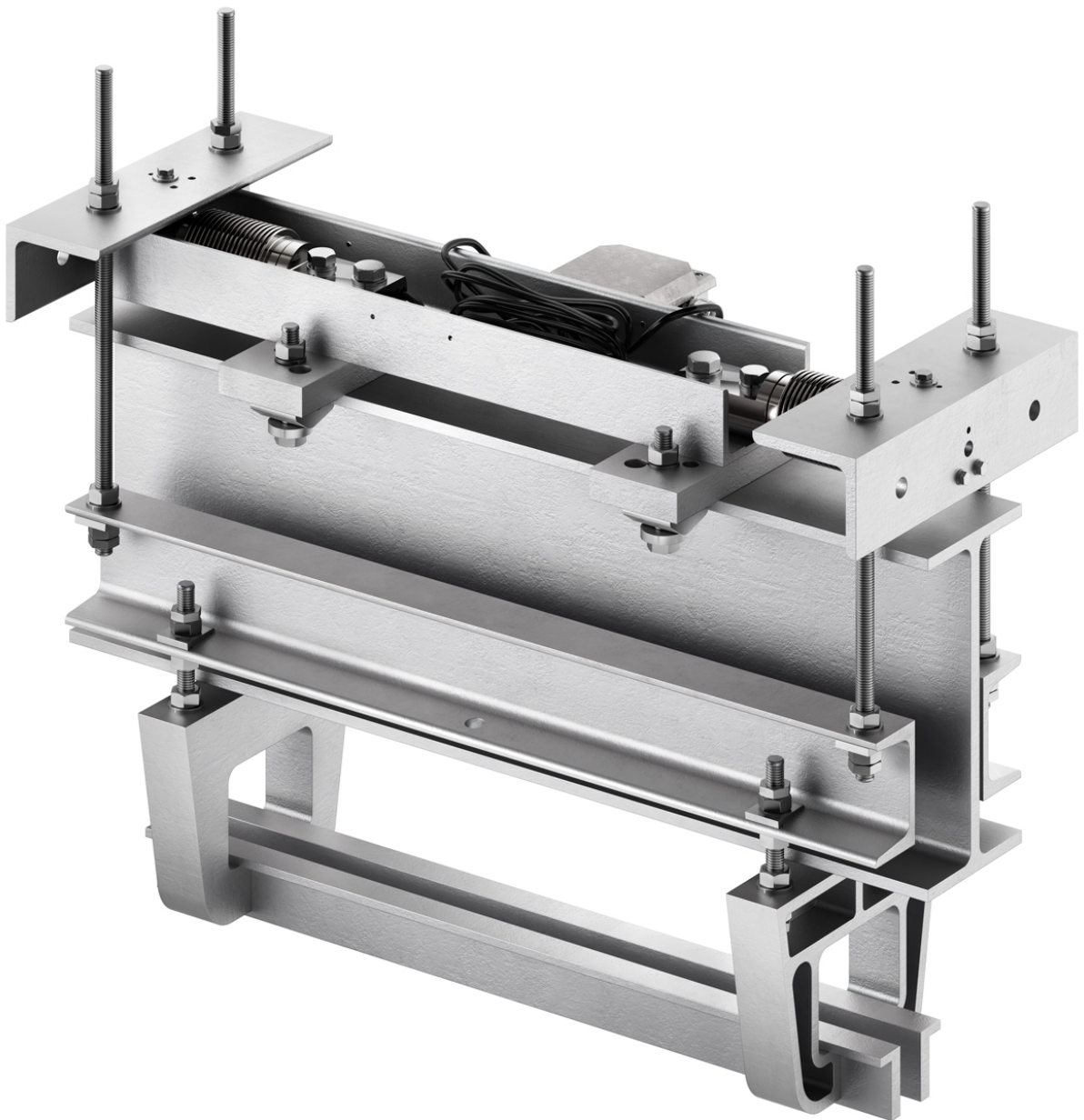
## iL Special 1000OR/MP

*The overhead track scale iL Special 1000OR/MP is marked by a robust, solid and easy-to service construction and is designed for universal installation in all common overhead track systems.*



**More information**  
High performance  
with a wide range of  
solutions and options.

Specifications	Facts	Details
<b>Weighing range</b>	150-1,000 kg	Interval: 50-500 g
<b>Load cell</b>	BB 500/1250	Strain gauge load cells
<b>Stabilization time</b>	approx. 2-3 seconds	
<b>Dimensions</b>	600 mm 800 mm 1,000 mm	Weighing rail length
<b>Materials</b>	Hot-galvanized  Stainless steel	Construction parts  Functional parts and fixing parts
<b>Mounting dimensions</b>	150-270 mm	from upper edge weighing rail to lower edge of carrier
<b>Mounting method</b>	Overhead track scale	
<b>IP rating</b>	IP67 IP65	Load cells Cable junction box (compound filled)
<b>Ambient temperature</b>	-10 °C to +40 °C -50 °C to +85 °C	Operation Storage
<b>Speed of temperature changes</b>	max. 5 °C/ h	
<b>Options</b>	<b>Facts</b>	<b>Details</b>
<b>Special dimensions</b>	On request	



**Symbols**



IP67 protection

IP65 protection

SG

Multi-point

**See also**

 [Tabelle\\_iL\\_Special\\_1000OMP.pdf](#) [▶ 3]

Weighing range	metrologically approved interval	Length weighing rail	Load capacity		Load cell	
			600 kg	1,000 kg	BB 500	BB 1250
150 kg	50 g	600/800/1,000 mm	X		X	
300 kg	100 g	600/800/1,000 mm	X		X	
600 kg	200 g	600/800/1,000 mm	X		X	
1,000 kg	500 g	600/800/1,000 mm		X		X
150/300 kg	50/100 g	600/800/1,000 mm	X		X	
300/600 kg	100/200 g	600/800/1,000 mm	X		X	

---

**Bizerba SE & Co. KG**

Wilhelm-Kraut-Straße 65  
72336 Balingen

T +49 7433 12-0  
fax: +49 7433 12-2696  
marketing@bizerba.com

**[www.bizerba.com](http://www.bizerba.com)**