

Marketix
perakende çözümleri

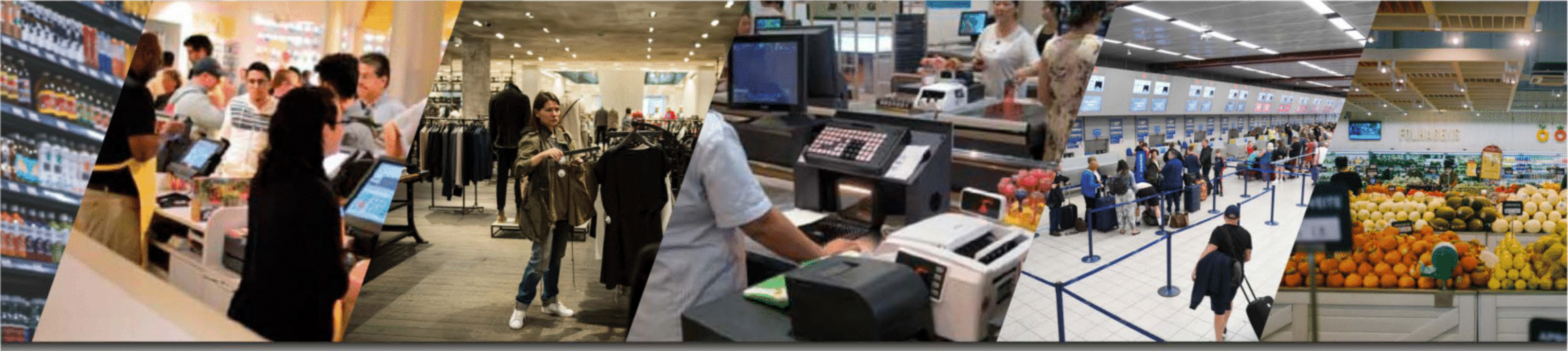
444 8 767
POS

PS5700



Masaüstü 2D Barkod Okuyucu

1D 2D



Şık ve ergonomik tasarım

1D/2D barkodlarda yüksek okuma performansı

Otomatik algılama sensörü ve opsiyonel olarak satılan stand beraberinde pratik kullanım

Yumuşak beyaz yardımcı aydınlatma ve yeşil LED uyarı sistemi sayesinde konforlu ve rahat bir tarama deneyimi

Tak-Çalıştır arayüzü sayesinde farklı sistemlere kolayca uyum sağlayabilme



PS5700 Specifications

PHYSICAL CHARACTERISTICS

Dimensions	14.5 x 15.3 x 8.2 cm / 5.7 x 6.0 x 3.2 in (Without stand) 18.7 x 15.3 x 11.2 cm / 7.4 x 6.0 x 4.4 in (With stand)
Weight	482 g (Without stand , without cable) 755 g (With stand , without cable)
Cable	Straight 2.0 m (Standart) , Straight 3.0 m (Optional)
Connector Type	RJ-45 Phone jack connector
Case Material	PC
Exit Windows Material	Tempered glass
Host System Interdfaces	RS-232 or USB Keyboard , USB vitural COM
Indicator Interface	Beeper and LED
Trigger Mode	Continue , Auto-Detect
Programming Method	Scanning special barcodes in sequence
Frimware Upgrade	Online

ELECTRICAL CHARACTERISTICS

Input Voltage	5.0 ± VDC
Current	Working 410 mA (Max 700 mA)

PERFORMANCE CHARACTERISTICS

CPU	32-bit ARM Microprocessor
Scan Pattern	Image
Image Size	1280 x 1024 pixels
Light Source	2700 K white LED
Scanning Angels	±70° , ±60° , 360° (Skew , Pitch , Roll)
Scanning Rate	95.3 inches / Second
Print Contrast	20% minimum reflectance difference
Decoding Capability	All common 1D/2D paper carcodes and mobile barcodes
Minimum Resolution	4 mil , 1 mil = 0.0254 mm
Decoding Depth	4 mil Code39 (9 chars) 35 mm - 70 mm 5 mil Code39 (3 chars) 25 mm - 80 mm 10 mil Code39 (3 chars) 0 mm - 120 mm 13 mil UPC (6 chars) 0 mm - 140 mm 15 mil Code39 (1 chars) 0 mm - 145 mm 20 mil Code39 (1 chars) 0 mm - 210 mm 6.7 mil PDF417 (20 chars) 20 mm - 95 mm 10 mil QR (20 chars) 10 mm - 100 mm 20 mil QR (20 chars) 10 mm - 100 mm



ENVIRONMENTAL CHARACTERISTICS

Temperature	Operating 0°C to 50°C , Storage -40°C to 70°C
Humidity	5% to 95% (non-condensing)
Safety	EMC: En55032 , ESD Protection : En55024 Photobiological Safety : En62471 RF Immunity : IEC61000-4-3, 10 V/m Artificiallight Immunity : 100.000 lux Sealing : IP52